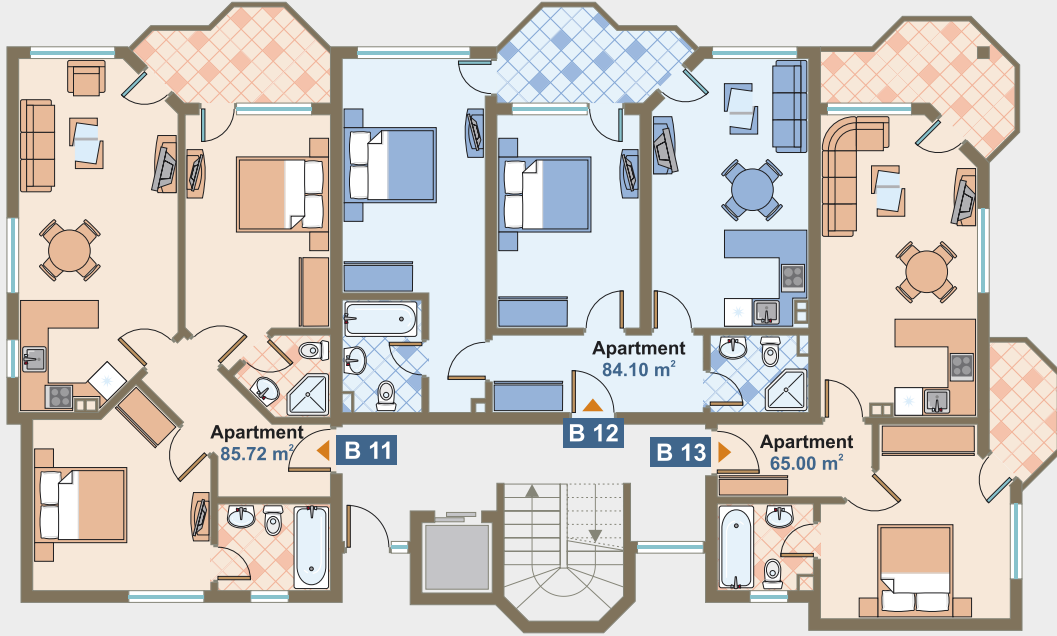


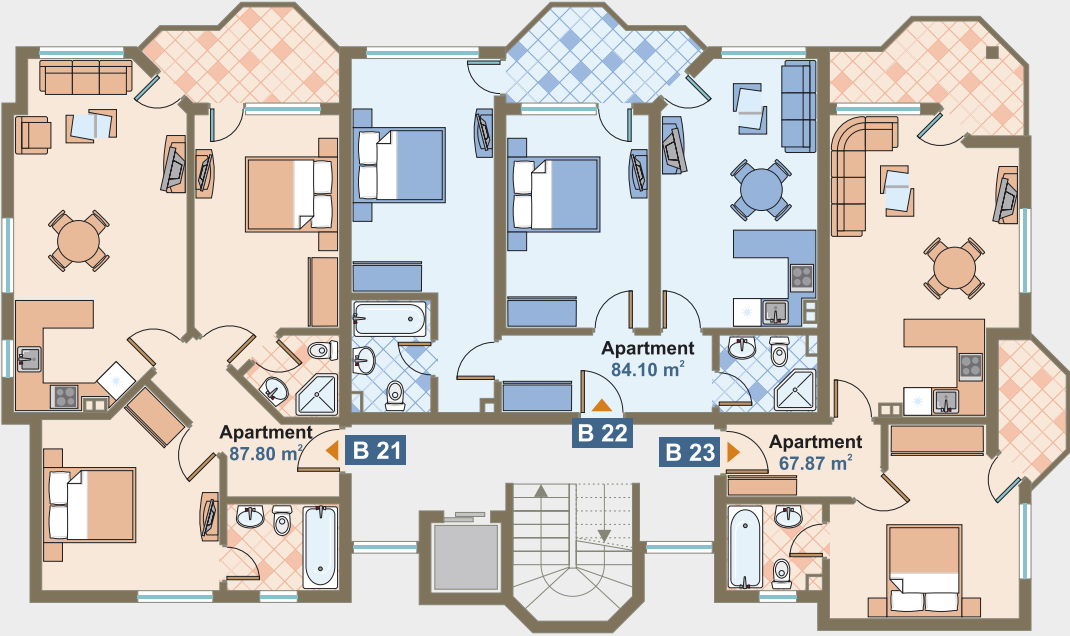
No	Type	Net res. area	TTL area <small>/ with common parts /</small>
B01	Apartment	54,12 m ²	63,75 m ²
B02	Apartment	49,09 m ²	55,49 m ²
B03	Apartment	50,43 m ²	57,00 m ²
B04	Apartment	54,21 m ²	63,85 m ²



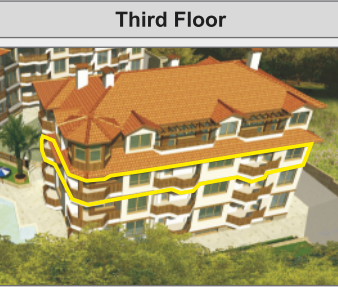
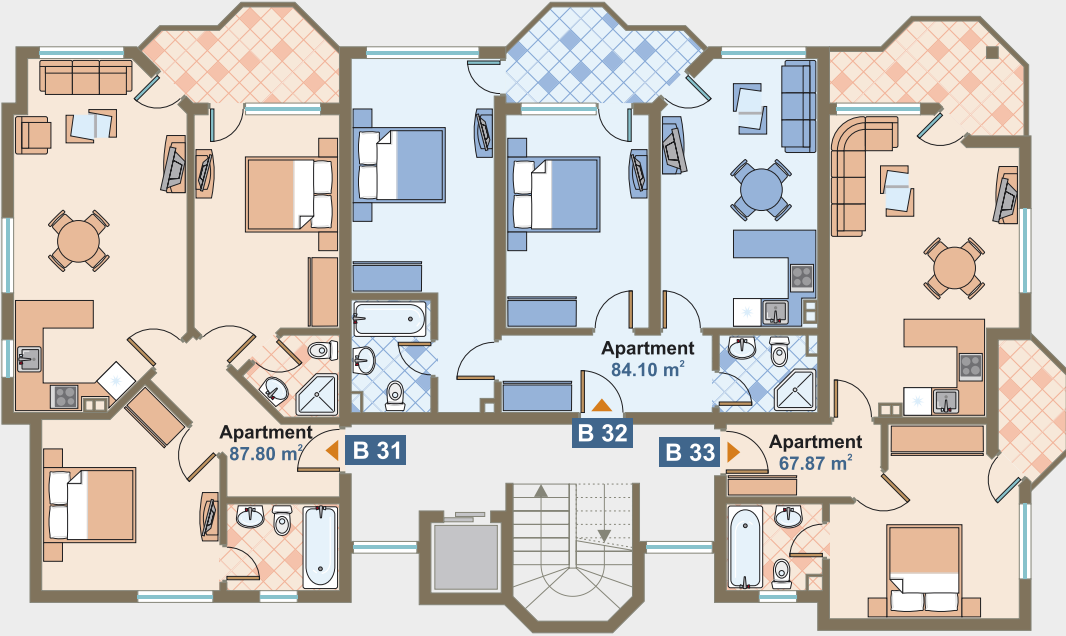
No	Type	Net res. area	TTL area <small>/ with common parts /</small>
B11	Apartment	85,72 m ²	98,61 m ²
B12	Apartment	84,10 m ²	96,66 m ²
B13	Apartment	65,00 m ²	75,08 m ²



Block B



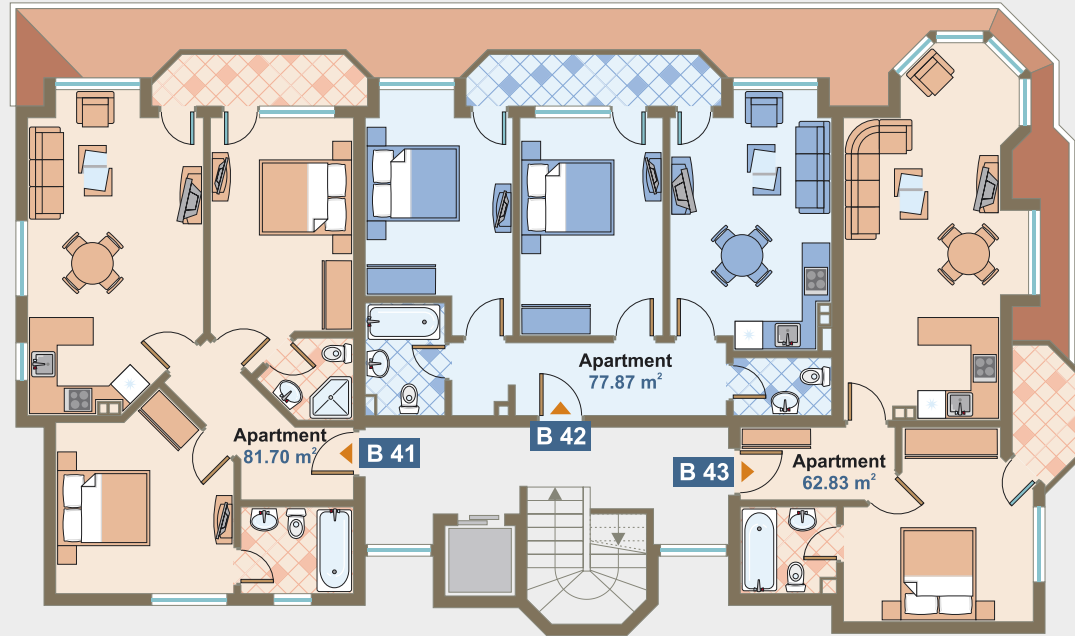
No	Type	Net res. area	TTL area / with common parts /
B21	Apartment	87,80 m ²	100,96 m ²
B22	Apartment	84,10 m ²	96,75 m ²
B23	Apartment	67,87 m ²	78,58 m ²



No	Type	Net res. area	TTL area / with common parts /
B31	Apartment	87,80 m ²	101,02 m ²
B32	Apartment	84,10 m ²	96,77 m ²
B33	Apartment	67,87 m ²	78,15 m ²



Block B



No	Type	Net res. area	TTL area / with common parts /
B41	Apartment	81,70 m ²	93,31 m ²
B42	Apartment	77,87 m ²	89,77 m ²
B43	Apartment	62,83 m ²	72,26 m ²

All visualisations and drawings used in these floor plans are for general illustrative purposes only and do not form part of any contract. They do not represent the actual product, which is yet to be constructed. Information about Byala Vista Beach Residence and updates from the construction progress can be found at the project website under www.byalavista.com.